

**1/2" DRIVER'S BRAKE VALVE  
FOR TWO PIPE SYSTEM.**

TOLERANCE ON ALL MACHINED  
DIMENSIONS NOT SHOWN IN  
DECIMALS TO BE  $\pm .010$ "

MACHINED WHERE  
MARKED

**GRESHAM & CRAVEN LTD.  
MANCHESTER.**

**DRG. 17/13552  
NO. 17G L**

TITLE	ITEM	MATER'L	N <sup>o</sup> . OFF	PATT.	FIN. WT.	REMARKS	DRAWN
COVER	17	CAST IRON	1	17/13552			TRACED N.M.L. 29.5.56
COVER	17G	"	1	"			PASSED 9.5.57 3.3.58 19.3.58 5.11.62

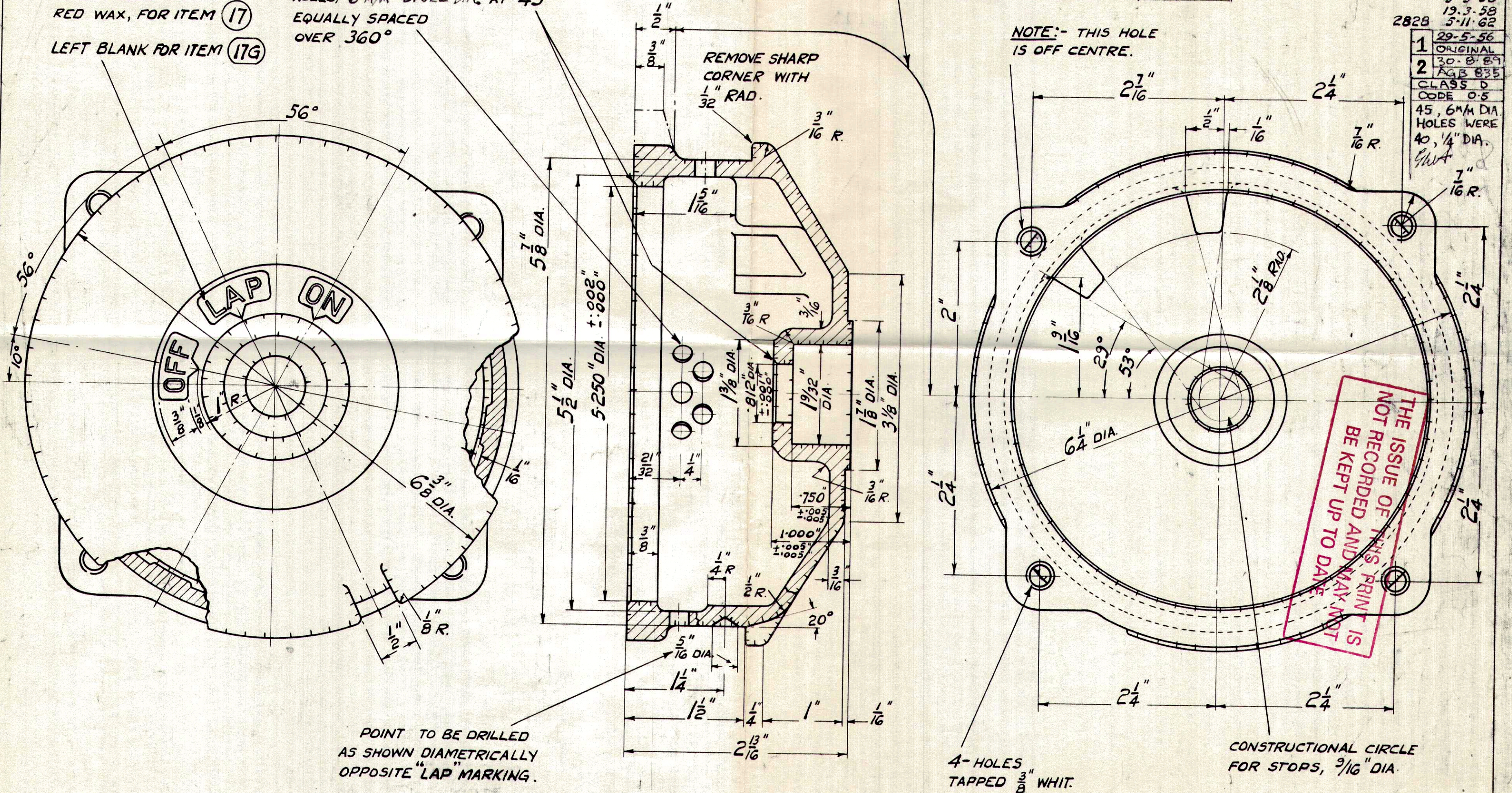
1/4" ENGRAVED LETTERS  
TO BE FILLED WITH  
RED WAX, FOR ITEM (17)  
LEFT BLANK FOR ITEM (17G)

2-ROWS OF 45  
HOLES, 6 MM DRILL DIA. AT 45°  
EQUALLY SPACED  
OVER 360°

BLACK STOVE ENAMEL FINISH  
(TO BE SANDBLASTED  
BEFORE ENAMELLING.)

REMOVE SHARP  
CORNER WITH  
1/32" RAD.

NOTE:- THIS HOLE  
IS OFF CENTRE.



1	29-5-56	ORIGINAL
2	30-8-59	AGB 835
CLASS D		
CODE 0.5		
45, 6MM DIA. HOLES WERE 40, 1/4\" DIA.		
GWT		
7/16\" R.		

THE ISSUE OF THIS PRINT IS  
NOT RECORDED AND MAY NOT  
BE KEPT UP TO DATE